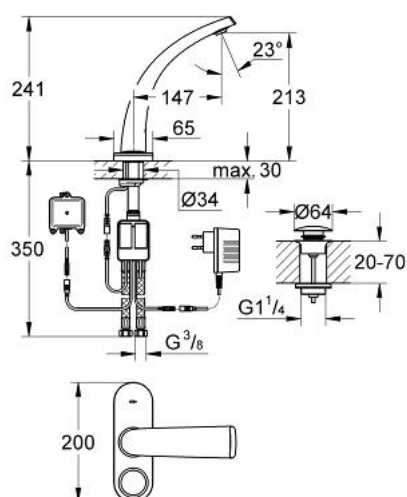


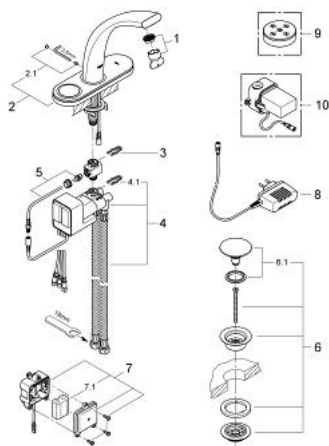
36 080 LS0 GROHE ONDUS DIGITAL BASIN MIXER



PRODUKTBESKRIVELSE

- Farve: Moon white
- with display
- Ethulsmontage
- advanced touch operating panel with backlit icons
- integrated digital display and intuitive menu navigation
- function unit
- integrated temperature sensor
- plug power supply 230 V AC / 6 V DC
- integrated battery back up
- 6V lithium-batteri, type CR-P2
- battery status indicator on display
- integreret perlator
- Push-open bundventil 1 1/4"
- Fleksible tilslutningsslang 3/8"
- digital flow limiter
- programmable, automatic safety shut-off (with default setting)
- CE-godkendt
- type of protection:
- faucet IP 66
- plug power supply IP 40
- battery unit IP 66
- operating panel IP 69K
- upgrade option with pre set panel 45 983

36 080 LS0 GROHE ONDUS DIGITAL BASIN MIXER



RESERVEDELE , august 2008 – now

- 1: Perlator (Bestillingsnummer 48009000)
- 2: betjeningspanel (Bestillingsnummer 45989LS0)
- 2.1: Befæstigelsessæt (Bestillingsnummer 48003000)
- 3: Befæstigelsesklemme (Bestillingsnummer 6554100M)
- 4: blandingsanordning (Bestillingsnummer 45990000)
- 4.1: Befæstigelsesklemme (Bestillingsnummer 6554100M)
- 5: temperaturføler (Bestillingsnummer 42349000)
- 6: Afløbsgarniture med tryk-åben (Bestillingsnummer 65807LS0)
- 6.1: prop (Bestillingsnummer 45986LS0)
- 7: Batterihus (Bestillingsnummer 42741000)
- 7.1: Batteri (Bestillingsnummer 42886000)
- 8: Strømforsyningsstik 230 V (Bestillingsnummer 65790000)
- 9: styreenhed (Bestillingsnummer 45983LS0)*
- 10: Stik strømforsyning 110-240 V (Bestillingsnummer 36078000)*

* Valgfrit tilbehør