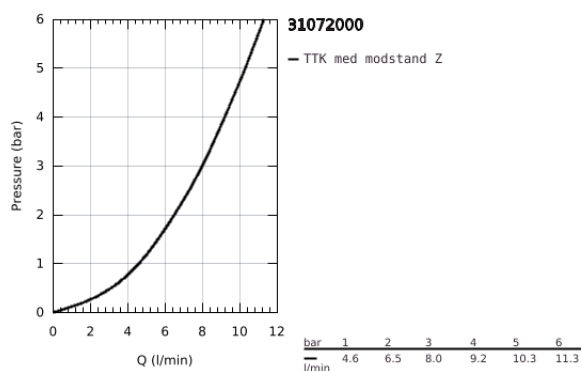
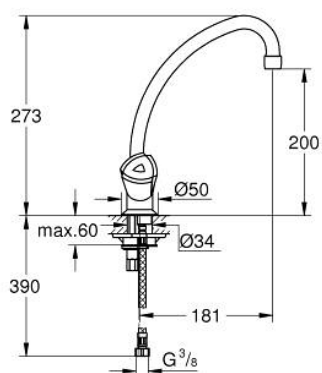


31 072 000 **COSTA L**



PRODUKTBESKRIVELSE

- Farve: chrome
- ABS handles
- varmeisoleret
- Slidestærk overfalde
- isolerede indre vandveje - bly- og nikkelfri indeni vandhanen
- GROHE Long-Life overdele
- mousseur
- med svingtud
- svingradius 360°
- GROHE QuickMount 2.0
- fleksible tilslutningsslang 3/8"



The diagram illustrates the exploded view of the 3D printer assembly. It shows the main body (1) with a nozzle (1.1) and a filament spool (1.2). A filament guide (2) is shown with a filament (2.1) passing through it. The filament is then fed into the main body (1) where it is extruded through the nozzle (1.1) to form a layer (3.2). The filament guide (2) is also shown with a filament (2.1) passing through it. The filament is then fed into the main body (1) where it is extruded through the nozzle (1.1) to form a layer (3.2).

- 1: Plastikgreb (Bestillingsnummer 45970000)
- 2: Overdel 1/2" (Bestillingsnummer 07146000)
- 3: Rørduløb (Bestillingsnummer 13073000)
- 3.1: Perlator (Bestillingsnummer 13928000)
- 3.2: o-ring Multipack 10 stk (Bestillingsnummer 0128000M)